

# TIA/EIA INTERIM STANDARD

---

## Interoperability Specification (IOS) for cdma2000 Access Network Interfaces

Release B

Part 1: Overview

---

TIA/EIA/IS-2001.1-B

MAY 2002

---

TELECOMMUNICATIONS INDUSTRY ASSOCIATION



The Telecommunications Industry Association  
represents the communications sector of



## NOTICE

TIA/EIA Engineering Standards and Publications are designed to serve the public interest through eliminating misunderstandings between manufacturers and purchasers, facilitating interchangeability and improvement of products, and assisting the purchaser in selecting and obtaining with minimum delay the proper product for his particular need. Existence of such Standards and Publications shall not in any respect preclude any member or nonmember of TIA/EIA from manufacturing or selling products not conforming to such Standards and Publications, nor shall the existence of such Standards and Publications preclude their voluntary use by those other than TIA/EIA members, whether the standard is to be used either domestically or internationally.

Standards and Publications are adopted by TIA/EIA in accordance with the American National Standards Institute (ANSI) patent policy. By such action, TIA/EIA does not assume any liability to any patent owner, nor does it assume any obligation whatever to parties adopting the Standard or Publication.

### TIA/EIA INTERIM STANDARDS

TIA/EIA Interim Standards contain information deemed to be of technical value to the industry, and are published at the request of the originating Committee without necessarily following the rigorous public review and resolution of comments which is a procedural part of the development of a TIA/EIA Standard.

TIA/EIA Interim Standards should be reviewed on an annual basis by the formulating Committee and a decision made on whether to proceed to develop a TIA/EIA Standard on this subject. TIA/EIA Interim Standards must be cancelled by the Committee and removed from the TIA/EIA Standards Catalog before the end of their third year of existence.

Publication of this TIA/EIA Interim Standard for trial use and comment has been approved by the Telecommunications Industry Association. Distribution of this TIA/EIA Interim Standard for comment shall not continue beyond 36 months from the date of publication. It is expected that following this 36 month period, this TIA/EIA Interim Standard, revised as necessary, will be submitted to the American National Standards Institute for approval as an American National Standard. Suggestions for revision should be directed to: Standards & Technology Department, Telecommunications Industry Association, 2500 Wilson Boulevard, Arlington, VA 22201.

(From Project No. 4545.1-RV2, formulated under the cognizance of the TIA TR-45.4 Subcommittee on Radio to Switching Technology.)

Published by

©TELECOMMUNICATIONS INDUSTRY ASSOCIATION 2002  
Standards & Technology Department  
2500 Wilson Boulevard  
Arlington, VA 22201

**PRICE: Please refer to current Catalog of  
EIA ELECTRONIC INDUSTRIES ALLIANCE STANDARDS and ENGINEERING PUBLICATIONS or  
call Global Engineering Documents, USA and Canada  
(1-800-854-7179) International (303-397-7956)**

All rights reserved  
Printed in U.S.A.

**PLEASE!**  
**DON'T VIOLATE**  
**THE**  
**LAW!**

This document is copyrighted by the TIA and may not be reproduced without permission.

Organizations may obtain permission to reproduce a limited number of copies through entering into a license agreement. For information, contact:

Global Engineering Documents  
15 Inverness Way East  
Englewood, CO 80112-5704 or call  
U.S.A. and Canada 1-800-854-7179, International (303) 397-7956

## **NOTICE OF DISCLAIMER AND LIMITATION OF LIABILITY**

The document to which this Notice is affixed has been prepared by one or more Engineering Committees of the Telecommunications Industry Association (“TIA”). TIA is not the author of the document contents, but publishes and claims copyright to the document pursuant to licenses and permission granted by the authors of the contents.

TIA Engineering Committees are expected to conduct their affairs in accordance with the TIA Engineering Manual (“Manual”), the current and predecessor versions of which are available at [http://www.tiaonline.org/standards/sfg/engineering\\_manual.cfm](http://www.tiaonline.org/standards/sfg/engineering_manual.cfm). TIA’s function is to administer the process, but not the content, of document preparation in accordance with the Manual and, when appropriate, the policies and procedures of the American National Standards Institute (“ANSI”).

THE USE OR PRACTICE OF CONTENTS OF THIS DOCUMENT MAY INVOLVE THE USE OF INTELLECTUAL PROPERTY RIGHTS (“IPR”), INCLUDING PENDING OR ISSUED PATENTS, OR COPYRIGHTS, OWNED BY ONE OR MORE PARTIES. TIA MAKES NO SEARCH OR INVESTIGATION FOR IPR. WHEN IPR CONSISTING OF PATENTS AND PUBLISHED PATENT APPLICATIONS ARE CLAIMED AND CALLED TO TIA’S ATTENTION, A STATEMENT FROM THE HOLDER THEREOF IS REQUESTED, ALL IN ACCORDANCE WITH THE MANUAL. TIA TAKES NO POSITION WITH REFERENCE TO, AND DISCLAIMS ANY OBLIGATION TO INVESTIGATE OR INQUIRE INTO, THE SCOPE OR VALIDITY OF ANY CLAIMS OF IPR.

ALL WARRANTIES, EXPRESS OR IMPLIED, ARE DISCLAIMED, INCLUDING WITHOUT LIMITATION, ANY AND ALL WARRANTIES CONCERNING THE ACCURACY OF THE CONTENTS, ITS FITNESS OR APPROPRIATENESS FOR A PARTICULAR PURPOSE OR USE, ITS MERCHANTABILITY AND ITS NON-INFRINGEMENT OF ANY THIRD PARTY’S INTELLECTUAL PROPERTY RIGHTS. TIA EXPRESSLY DISCLAIMS ANY AND ALL RESPONSIBILITIES FOR THE ACCURACY OF THE CONTENTS AND MAKES NO REPRESENTATIONS OR WARRANTIES REGARDING THE CONTENT’S COMPLIANCE WITH ANY APPLICABLE STATUTE, RULE OR REGULATION.

TIA SHALL NOT BE LIABLE FOR ANY AND ALL DAMAGES, DIRECT OR INDIRECT, ARISING FROM OR RELATING TO ANY USE OF THE CONTENTS CONTAINED HEREIN, INCLUDING WITHOUT LIMITATION ANY AND ALL INDIRECT, SPECIAL, INCIDENTAL OR CONSEQUENTIAL DAMAGES (INCLUDING DAMAGES FOR LOSS OF BUSINESS, LOSS OF PROFITS, LITIGATION, OR THE LIKE), WHETHER BASED UPON BREACH OF CONTRACT, BREACH OF WARRANTY, TORT (INCLUDING NEGLIGENCE), PRODUCT LIABILITY OR OTHERWISE, EVEN IF ADVISED OF THE POSSIBILITY OF SUCH DAMAGES. THE FOREGOING NEGATION OF DAMAGES IS A FUNDAMENTAL ELEMENT OF THE USE OF THE CONTENTS HEREOF, AND THESE CONTENTS WOULD NOT BE PUBLISHED BY TIA WITHOUT SUCH LIMITATIONS.

# Table of Contents

1  
2  
3  
4  
5  
6  
7  
8  
9  
10  
11  
12  
13  
14  
15  
16  
17  
18  
19  
20  
21  
22  
23  
24  
25

- 1.0 Introduction..... 1
- 1.1 Overview..... 1
  - 1.1.1 Purpose..... 1
  - 1.1.2 Scope..... 2
- 1.2 References..... 3
  - 1.2.1 TIA / EIA ..... 3
  - 1.2.2 3GPP2 ..... 4
- 1.3 Terminology..... 5
  - 1.3.1 Acronyms ..... 5
  - 1.3.2 Definitions..... 6
- 1.4 Organization..... 8
  - 1.4.1 This Revision of the IOS..... 8
  - 1.4.2 Overall IOS Specifications..... 9
- 1.5 Document Layout..... 9
- 1.6 Documentation Conventions ..... 10
  - 1.6.1 Procedural Descriptions ..... 11
- 2.0 Interface Model..... 13
  - 2.1 Reference Points A, A<sub>ter</sub>, A<sub>quinter</sub>, and A<sub>quater</sub>..... 13
  - 2.2 Interface Reference Model..... 13
- 3.0 Information Flows..... 15
- 4.0 Packet Data Micro-Mobility and Macro-Mobility Concepts ..... 17

## List of Figures

1  
2  
3  
4  
5  
6  
7

Figure 1.6-1 Document Convention Example: Call Clear Initiated by MS .....	11
Figure 2.2-1 Reference Model for cdma2000 Access Network Interfaces .....	14
Figure 4.0-1 Levels of Packet Data Mobility.....	17

# Foreword

(This foreword is not part of this standard.)

This document was produced by Working Groups TR45.4 of the Telecommunications Industry Association and TSG-A of the Third Generation Partnership Project 2. This document was developed in accordance with TIA/EIA and 3GPP2 procedural guidelines, and represents the consensus position of the Working Groups.

The Working Groups acknowledge the contributions made by the following individuals in the development of this standard:

<b>Name</b>	<b>Representing</b>	<b>Position</b>
Dale Baldwin	Sprint PCS	TIA TR45.4 Chair
George Turnipseed	Sprint PCS	3GPP2 TSG-A Chair
Roger Edwards	3GPP2 Secretariat	Professional Editor
Srini Rao	Winphoria	Part 1 (Overview) Technical Editor
Scott Marin	Motorola	Part 2 (Transport) Technical Editor
Bill Semper	Samsung	Part 3 (Features) Technical Editor and Chair for Comment Resolution
Yasaman Abtahi and Mini Vasudevan	Nortel Networks	Part 4 (A1/A2/A5) Technical Editors
Janice Wunsch	Lucent Technologies	Part 5 (A3/A7) Technical Editor
Shahab Sayeedi	Motorola	Part 6 (A8/A9) Technical Editor
Roger Gustavsson and Erik Colban	Ericsson	Part 7 (A10/A11) Technical Editors

Suggestions for improvement of this standard are welcome. They should be sent to:  
 Telecommunications Industry Association  
 Engineering Department  
 Suite 300  
 250 Wilson Boulevard  
 Arlington, VA 22201 USA

1  
2  
3  
4  
5  
6  
7

(This page intentionally left blank.)

## 1.0 Introduction

---

### 1.1 Overview

---

This standard describes the overall system functions, including services and features required for interfacing a Base Station (BS) with the Mobile Switching Center (MSC), with other Base Stations, and with the Packet Control Function (PCF); and for interfacing the PCF with the Packet Data Service Node (PDSN).

This standard is intended to provide sufficient specification of a set of interfaces to support the interoperability of one vendor's equipment with that of another. Which interface(s) a vendor chooses to implement is dependent on business decisions, and is up to each vendor. However conformance to any given interface specified within this standard requires all of the messages and procedures for supported features on that interface to be supported as specified within this standard. Establishing standard interfaces allows the BS, PCF, PDSN, and MSC equipment to evolve independently and to be provided by multiple vendors.

#### 1.1.1 Purpose

---

The purpose is to provide the standard for:

- interfacing an MSC with one or more BSs,
- interfacing a BS with one or more BSs,
- interfacing a PCF with one or more BSs,
- interfacing one or more PDSNs with one or more PCFs.

This document defines the functional capabilities, including services and features, of the specified interfaces. These services and features are the defining characteristics that are the basis for the overall system standard.

The MSC-BS Interface provides telecommunications services access between a Base Station and a Mobile Switching Center. It specifically represents the demarcation point between the BS and the MSC which coincides with the Reference Point "A" as depicted in the Telecommunications Industry Association (TIA) TR45 Network Reference Model (NRM), see [18]. This point establishes the technical interface and designates the test points and operational division of responsibility between the BS and the MSC.

This standard fulfills the following criteria:

- supports current TIA/EIA/IS-2000, TIA/EIA/IS-834 and TIA/EIA/IS-95 air interfaces;
- makes maximum use of existing standards from the TIA and other sources;
- promotes reliability enhancement, technical innovation, network product availability, and economic competition;
- allows connection of various manufacturers' BSs to the same MSC;
- supports future MSC and BS implementations;
- allows the separate evolution of MSC and BS technology.

1 The source BS - target BS interface provides for inter-BS soft/softer handoffs. It  
 2 specifically represents the demarcation point between two Base Stations which coincides  
 3 with the Reference Point "A<sub>ter</sub>". This point establishes the technical interface and  
 4 designates the test points and operational division of responsibility between the source  
 5 BS and target BS. The source BS and target BS interface is defined as the A3/A7  
 6 interface shown in Figure 2.2-1 "Reference Model for cdma2000 Access Network  
 7 Interfaces."

8 The PCF-PDSN interface provides access between a Packet Control Function and a  
 9 Packet Data Serving Node for high speed packet data services. It specifically represents  
 10 the demarcation point between the PCF and the PDSN which coincides with the  
 11 Reference Point "A<sub>quater</sub>". This point establishes the technical interface and designates  
 12 the test points and operational division of responsibility between the PCF and the PDSN.  
 13 The PCF-PDSN interface is defined as the A10/A11 interface shown in Figure 2.2-1  
 14 "Reference Model for cdma2000 Access Network Interfaces".

15 The PCF-PDSN interface definition fulfills the following criteria:

- 16 • allows connection of various manufacturers' PCFs to the same PDSN and vice versa;
- 17 • makes maximum use of existing standards from the Internet Engineering Task Force  
 18 (IETF) and other sources;
- 19 • promotes quality of service and accounting information exchange between the PCFs  
 20 and the PDSNs;
- 21 • promotes reliability enhancement, technical innovation, network product availability,  
 22 and economic competition;
- 23 • supports future PCF and PDSN implementations;
- 24 • allows the separate evolution of PCF and PDSN technologies.

25 The BS-PCF interface provides access between the Base Station and the Packet Control  
 26 Function for high speed packet data services. It specifically represents the demarcation  
 27 point between the BS and the PCF which coincides with the Reference Point "A<sub>quinter</sub>".  
 28 This point establishes the technical interface and designates the test points and  
 29 operational division of responsibility between the BS and the PCF. The BS-PCF interface  
 30 is defined as the A8/A9 interface shown in Figure 2.2-1 "Reference Model for cdma2000  
 31 Access Network Interfaces".

## 32 1.1.2 Scope

---

33 This standard provides the specification for the Interfaces which coincides with the  
 34 Reference Point "A", "A<sub>ter</sub>", "A<sub>quater</sub>", and "A<sub>quinter</sub>" defined in the TR45 Network  
 35 Reference Model shown in [18].

36 The scope of this standard includes the following topics:

- 37 • MSC-BS and BS-BS interfaces:
  - 38 – Descriptions of the specified functional capabilities that provide wireless  
 39 telecommunications services across the MSC-BS and BS-BS Interfaces as  
 40 defined in the TR45 Network Reference Model;
  - 41 – Descriptions of the division of responsibility of the functions provided between  
 42 the BS and the MSC, and between the source BS and the target BS, without  
 43 prescribing specific implementations;

- 1                   – Descriptions of the MSC-BS Interface and the BS-BS interface standards that
- 2                   support DS-41 and cdma2000 systems.
- 3                   • PCF-PDSN interfaces:
- 4                   – Descriptions of the specified functional capabilities that provide packet data
- 5                   services across the PCF-PDSN interface;
- 6                   – Descriptions of the division of responsibility of the functions provided between
- 7                   the PCF and the PDSN without prescribing specific implementations.
- 8                   • BS-PCF interfaces:
- 9                   – Descriptions of the specified functional capabilities that provide packet data
- 10                  services across the BS-PCF interface;
- 11                  – Descriptions of the division of responsibility of the functions provided between
- 12                  the BS and the PCF without prescribing specific implementations.

13                  The interfaces defined in this standard are specified by a set of characteristics, including:

- 14                  • Physical and electromagnetic parameters.
- 15                  • Channel structures.
- 16                  • Message types and contents.
- 17                  • Network operating procedures.
- 18                  • User data framing and transport.

## 19                  **1.2                  References**

---

### 21                  **1.2.1                  TIA / EIA**

---

22                  For ease of cross referencing, the Telecommunications Industry Association (TIA) /

23                  Electronics Industry Association (EIA) references provided in this section are aligned

24                  with the 3GPP2 references, provided in section 1.2.2. For consistency within IOS parts,

25                  the most commonly referenced documents [1~17] shall be the same as they appear here

26                  in this part, or left as “Reserved” if not used in a particular IOS part.

- 27                  [1]           TIA/EIA/IS-2000.1-A, *Introduction for cdma2000 Standards for Spread*
- 28                  *Spectrum Systems*, March, 2000.
- 29                  [2]           TIA/EIA/IS-2000.2-A-1, *Physical Layer Standard for cdma2000 Spread*
- 30                  *Spectrum Systems*, November, 2000.
- 31                  [3]           TIA/EIA/IS-2000.3-A-1, *Medium Access Control (MAC) Standard for*
- 32                  *cdma2000 Spread Spectrum Systems*, November, 2000.
- 33                  [4]           TIA/EIA/IS-2000.4-A-1, *Signaling Link Access Control (LAC) Standard for*
- 34                  *cdma2000 Spread Spectrum Systems*, November, 2000.
- 35                  [5]           TIA/EIA/IS-2000.5-A-1, *Upper Layer (Layer 3) Signaling Standard for*
- 36                  *cdma2000 Spread Spectrum Systems*, November, 2000.
- 37                  [6]           TIA/EIA/IS-2000.6-A-1, *Analog Signaling Standard for cdma2000 Spread*
- 38                  *Spectrum Systems*, November, 2000.
- 39                  [7]           TIA/EIA/IS-834, *G3G CDMA-DS to ANSI/TIA/EIA-41*, March, 2000.
- 40                  [8]           TIA/EIA/IS-835-A, *cdma2000 Wireless IP Network Standard*, May 2001.
- 41                  [9]           TIA/EIA-41-D, *Cellular Radiotelecommunications Intersystem Operations*;
- 42                  December, 1997.
- 43                  [10]          TIA/EIA-95-B, *Mobile Station - Base Station Compatibility Standard for*
- 44                  *Wideband Spread Spectrum Cellular Systems*; March, 1999.

- 1 [11] TIA/EIA-2001.1-B, *Interoperability Specification (IOS) for cdma2000 Access*  
2 *Network Interfaces – Part 1 Overview*, May, 2002.
- 3 [12] TIA/EIA-2001.2-B, *Interoperability Specification (IOS) for cdma2000 Access*  
4 *Network Interfaces – Part 2 Transport*, May, 2002.
- 5 [13] TIA/EIA-2001.3-B, *Interoperability Specification (IOS) for cdma2000 Access*  
6 *Network Interfaces – Part 3 Features*, May, 2002.
- 7 [14] TIA/EIA-2001.4-B, *Interoperability Specification (IOS) for cdma2000 Access*  
8 *Network Interfaces – Part 4 (A1, A2, and A5 Interfaces)*, May, 2002.
- 9 [15] TIA/EIA-2001.5-B, *Interoperability Specification (IOS) for cdma2000 Access*  
10 *Network Interfaces – Part 5 (A3 and A7 Interfaces)*, May, 2002.
- 11 [16] TIA/EIA-2001.6-B, *Interoperability Specification (IOS) for cdma2000 Access*  
12 *Network Interfaces – Part 6 (A8 and A9 Interfaces)*, May, 2002.
- 13 [17] TIA/EIA-2001.7-B, *Interoperability Specification (IOS) for cdma2000 Access*  
14 *Network Interfaces – Part 7 (A10 and A11 Interfaces)*, May, 2002.
- 15 [18] TIA/EIA/TSB100-A, *Wireless Network Reference Model*, March, 2001.

## 16 **1.2.2 3GPP2**

---

17 The 3GPP2 references are aligned with the TIA/EIA references of Section 1.2.1 and are  
18 provided here for information and cross reference purposes.

- 19 [1] 3GPP2 C.S0001-A, *Introduction to cdma2000 Standards for Spread Spectrum*  
20 *Systems*, June, 2000.
- 21 [2] 3GPP2 C.S0002-A-1, *Physical Layer Standard for cdma2000 Spread Spectrum*  
22 *Systems*, October, 2000.
- 23 [3] 3GPP2 C.S0003-A-1, *Medium Access Control (MAC) Standard for cdma2000*  
24 *Spread Spectrum Systems*, October, 2000.
- 25 [4] 3GPP2 C.S0004-A-1, *Signaling Link Access Control (LAC) Standard for c*  
26 *dma2000 Spread Spectrum Systems*, October, 2000.
- 27 [5] 3GPP2 C.S0005-A-1, *Upper Layer (Layer 3) Signaling Standard for cdma2000*  
28 *Spread Spectrum Systems*, October, 2000.
- 29 [6] 3GPP2 C.S0006-A-1, *Analog Signaling Standard for cdma2000 Spread*  
30 *Spectrum Systems*, October, 2000.
- 31 [7] 3GPP2 C.S0007-0, *Direct Spread Specification for Spread Spectrum Systems on*  
32 *ANSI-41 (DS-41) (Upper Layers Air Interface)*, June, 2000.
- 33 [8] 3GPP2 P.S0001-A, “*Wireless IP Network Standard*”, July, 2000.
- 34 [9-10] Reserved.
- 35 [11] 3GPP2 A.S0011-0, *Interoperability Specification (IOS) for cdma2000 Access*  
36 *Network Interfaces – Part 1 Overview*, May, 2002.
- 37 [12] 3GPP2 A.S0012-0, *Interoperability Specification (IOS) for cdma2000 Access*  
38 *Network Interfaces – Part 2 Transport*, May, 2002.
- 39 [13] 3GPP2 A.S0013-0, *Interoperability Specification (IOS) for cdma2000 Access*  
40 *Network Interfaces – Part 3 Features*, May, 2002.
- 41 [14] 3GPP2 A.S0014-0, *Interoperability Specification (IOS) for cdma2000 Access*  
42 *Network Interfaces – Part 4 (A1, A2, and A5 Interfaces)*, May, 2002.
- 43 [15] 3GPP2 A.S0015-0, *Interoperability Specification (IOS) for cdma2000 Access*  
44 *Network Interfaces – Part 5 (A3 and A7 Interfaces)*, May, 2002.
- 45 [16] 3GPP2 A.S0016-0, *Interoperability Specification (IOS) for cdma2000 Access*  
46 *Network Interfaces – Part 6 (A8 and A9 Interfaces)*, May, 2002.
- 47 [17] 3GPP2 A.S0017-0, *Interoperability Specification (IOS) for cdma2000 Access*  
48 *Network Interfaces – Part 7 (A10 and A11 Interfaces)*, May, 2002.
- 49 [18] 3GPP2 S.R0005-B, *Network Reference Model for cdma2000 Spread Spectrum*  
50 *Systems*, April, 2001.

## 1.3 Terminology

---

### 1.3.1 Acronyms

---

<b>Acronym</b>	<b>Meaning</b>
3GPP	Third Generation Partnership Project
3GPP2	Third Generation Partnership Project 2
ANSI	American National Standards Institute
BS	Base Station
BSC	Base Station Controller
BTS	Base Transceiver System
CC	Call Control
CDMA	Code Division Multiple Access
DS-41	An operational mode in which the BS and MS operate with the direct spread (DS) radio layers of the UMTS system defined by 3GPP, and the upper layers defined in IS-2000 that conform to and interoperate with ANSI-41 based networks.
EIA	Electronics Industry Association
FA	Foreign Agent
HLR	Home Location Register
IETF	Internet Engineering Task Force
IOS	Interoperability Specification
IP	Internet Protocol
IS	Interim Standard
ISDN	Integrated Services Digital Network
IWF	Interworking Function
kbps	kilobits per second
MIP	Mobile Internet Protocol
MM	Mobility Management
MS	Mobile Station
MSC	Mobile Switching Center
MTSO	Mobile Telephone Switching Office
NRM	Network Reference Model
PCF	Packet Control Function
PCM	Pulse Code Modulation
PDSN	Packet Data Serving Node
PSTN	Public Switched Telephone Network
RLP	Radio Link Protocol
SDU	Selection/Distribution Unit

<b>Acronym</b>	<b>Meaning</b>
TIA	Telecommunications Industry Association
TSB	Telecommunications Systems Bulletin
UDI	Unrestricted Digital Information
UMTS	Universal Mobile Telecommunication System

1

## 2 1.3.2 Definitions

---

3 **Base Station.** An entity in the public radio telecommunications system used for radio  
4 telecommunications with mobile stations.

5 **Base Station Controller.** The control portion of the base station that includes call control  
6 logic and interconnections to the MSC, the BTSs that are part of the BS, other BSCs, and  
7 BTSs of neighboring BSs for purposes of soft/softer handoff.

8 **Base Transceiver Station.** A component of a base station that includes radio equipment.  
9 A BTS is sometimes equated with the physical cell site of a wireless network.

10 **Bearer Connection.** A connection intended to provide a path for user traffic.

11 **Call Association.** The totality of the active communication between the mobile station  
12 and the network, including all signaling and transfer of user information.

13 **Cell.** The unit of a base station having the ability to radiate in a given geographic area. In  
14 this standard, a Cell ID refers to a particular cell and sector.

15 **Handoff.** Handoff is the process by which an air interface circuit between a mobile  
16 station and a base station is transferred from the current base station equipment and air  
17 interface channel to either a different base station equipment and air interface channel or  
18 a different air interface channel on the current base station. The following types of  
19 handoff are supported:

- 20 1. Hard Handoff: A handoff that requires the mobile station to tune its radio  
21 equipment or to reestablish synchronization.
- 22 2. Soft Handoff: A handoff that does not require the mobile station to tune its  
23 radio equipment or to reestablish synchronization and that uses the same  
24 frame selection function (and voice transcoding function, if this is a voice  
25 call) in the network for both the old and new air interface channels.
- 26 3. Soft Handoff with Pre-Selection: The configuration achieved when a BS  
27 internally splits a single forward flow of coded user information from the  
28 frame selector to send it to two or more cells controlled by that BS. In the  
29 reverse direction, the BS joins the flows of coded user information frames  
30 from those cells, selects the best quality frame (preselection), and forwards  
31 only that selected frame to the frame selector.
- 32 4. Softer Handoff: A handoff involving two or more traffic channels on a call  
33 such that in the forward direction the BS splits a single flow of traffic channel  
34 frames into two or more forward flows to be sent to the mobile station with  
35 the power control combined bit set to indicate that the same reverse power  
36 control information is to be used. In the reverse direction the BS combines the

1 traffic channel frames that are received from two or more cells/sectors and  
2 forms a single reverse flow from this combination.

3 **Interworking Function.** The Interworking Function (IWF), used in the context of this  
4 standard, provides a translation of the user traffic on a circuit data call between the fixed  
5 network and the air interface.

6 **Logical Channel.** A logical path that can carry signaling, user traffic, or a combination  
7 of the two between two entities such as the network and the mobile station. A logical  
8 channel can be instantiated over one or more physical channels. Logical channels may  
9 also share physical channels.

10 **Mobile Switching Center.** The MSC switches MS-originated or MS-terminated traffic.  
11 An MSC connects to one or more base stations. It may connect to other public networks  
12 PSTN, ISDN, etc., other MSCs in the same network, or MSCs in different networks. (It  
13 has been referred to as Mobile Telephone Switching Office, MTSO.) It provides the  
14 interface for user traffic between the wireless network and other public switched  
15 networks, or other MSCs.

16 **Packet Control Function.** An entity in the radio access network that manages the relay  
17 of packets between the BS and the PDSN.

18 **Packet Data Session.** An instance of use of packet data service by a mobile user. A  
19 packet data session begins when the user invokes packet data service. A packet data  
20 session ends when the user or the network terminates packet data service. During a  
21 particular packet data session, the user may change locations but the same IP address is  
22 maintained.

23 **Packet Data Serving Node.** An entity that routes MS originated or MS terminated  
24 packet data traffic. A PDSN establishes, maintains and terminates link layer sessions to  
25 mobile stations.

26 **Physical Channel.** A physical path between the SDU function and the mobile station that  
27 consists of any connecting A3 traffic channel(s) and radio channel(s). Depending on the  
28 radio technology in use, a physical channel may be in soft handoff between the mobile  
29 station and the SDU function.

30 **SDU Function.** The SDU function (Selection/Distribution Unit function) includes the  
31 following functions:

32 Traffic Handler: This function exchanges traffic bits with the associated vocoder  
33 or CDMA Radio Link Protocol (RLP) function, or is directly connected to the  
34 A5 interface.

35 Signaling Layer 2: This function performs the layer 2 functionality of the air  
36 interface signaling protocol and is responsible for the reliable delivery of layer 3  
37 signaling messages between the base station and the mobile station.

38 Multiplex Sublayer: This function multiplexes and demultiplexes user traffic  
39 and signaling traffic for the air interface.

40 Power Control: This function administrates the forward and reverse link power  
41 control in a CDMA system. This function and the channel element provide the  
42 power control function for the CDMA operation. As part of this function, it

1 generates or utilizes relevant power control information that is exchanged over  
2 the air interface or with the channel element.

3 Frame Selection/Distribution: This function is responsible for selecting the  
4 “best” incoming air interface reverse link frame from the channel elements  
5 involved in the soft handoff. It also distributes forward air interface frames to all  
6 channel elements involved in a call.

7 Backhaul Frame Handler: This function demultiplexes the control information  
8 and the air interface reverse frame from the frame received over the backhaul  
9 network. It also multiplexes the control information and the air interface frames  
10 in the forward direction.

11 External Frame Handler: This function exchanges backhaul frames with channel  
12 elements which are remote from the Selector.

13 Intra-BS Frame Handler: This function exchanges backhaul frames with channel  
14 elements involved in intra-BS soft handoff.

15 Control: This function provides control functions.

16 **Sector**. A face of a of physical radio equipment implementation

17 **Signaling Connection**. A connection intended to provide a path for signaling traffic.

18 **Source Base Station**. The BS that is in control of the call is designated the source BS and  
19 remains the source BS until it is removed from control of the call.

20 **Target Base Station**. Any BS that supports the call other than the source BS is  
21 designated.

## 22 **1.4 Organization**

---

23 This section outlines the relationship of the current specification with neighboring  
24 elements (air interface, packet data network and the core network) as well as with older  
25 versions of the IOS itself. The cross reference of IOS specifications in section 1.4.2 is  
26 provided for information and is not intended to indicate additional requirements for the  
27 IOS.

### 28 **1.4.1 This Revision of the IOS**

---

29 This revision of the IOS specification describes the protocol necessary to provide to  
30 wireless radio telephone subscribers certain services requiring interaction between the  
31 Mobile Switching Center (MSC), the Packet Control Function (PCF), the Packet Data  
32 Service Node (PDSN), and the Base Station (BS), and is based on interoperation with the  
33 cdma2000 air interface [1]~[6], the wireless IP network [8] and the ANSI-41 core  
34 network [9].

35

## 1.4.2 Overall IOS Specifications

When addressing previous revisions of the Interoperability Specification, this revision of the specification uses a common (historical) identifier, IOS Vx.y, which can be cross referenced as shown in Table 1.4.2-1.

**Table 1.4.2-1 IOS Cross References**

Common <sup>1</sup>	3GPP2	CDG	TIA	Air Release <sup>2</sup>
-	-	-	IS-634	IS-95
-	-	-	IS-634-A May 1998	IS-95-A
-	-	-	IS-634-B April 1999	TIA/EIA-95-B
IOS v2.0.1	-	IOS v2.0.1 Dec 1998	-	-
IOS v2.2	-	IOS v2.2 June 1999	-	-
IOS v2.3	-	IOS v2.3 Feb 2000	-	-
IOS v2.4	-	IOS v2.4 March 2000	-	-
IOS v3.0	-	IOS v3.0 Nov 1998	-	-
IOS v3.1.1	-	IOS v3.1.1 Aug 1999	-	-
IOS v3.2	-	IOS v3.2 March 2001	-	-
IOS V4.0	A.S0001 June 2000	-	IS-2001	IS-2000
IOS V4.1	A.S0001-A Dec 2000	-	IS-2001-A August 2001	IS-2000-A
IOS V4.2	A.S0011~17 Nov 2001	-	TIA-2001-B	TIA-2000-B

## 1.5 Document Layout

The Interoperability Specification is organized into seven parts, each published in a separate document:

Overview	general overview, published in [11]
Transport	protocol definitions and transport requirements, published in [12]
Features	descriptions of features, published in [13]

<sup>1</sup> The Common identifier aligns with numbering used in the Software Version Information Element.

<sup>2</sup> The relationship between air interface and IOS releases is provided for information and is not intended to be an absolute indication of features supported by an IOS release.

1	A1/A2/A5 Interfaces	definition of the A1/A2/A5 interfaces, published in [14]
2	A3/A7 Interfaces	definition of the A3/A7 interfaces, published in [15]
3	A8/A9 Interfaces	definition of the A8/A9 interfaces, published in [16]
4	A10/A11 Interfaces	definition of the A10/A11 interfaces, published in [17]

5 The interface documents define the individual interfaces – this includes message  
6 procedures, message bitmaps, information element definitions, and the definitions of  
7 timers that are related to the interface. Note that some information elements are used on  
8 multiple interfaces; in this situation, the information element is defined in each of the  
9 associated interface documents. Changes to the definition of an information element in  
10 one interface document do not imply changes to its definition in other interface  
11 documents. However, insofar as possible, the same Information Element Identifier shall  
12 be used in all definitions of the same information element.

13 The Features document defines how features are implemented in the IOS - which  
14 interfaces are used, which messages are used, and how the feature is implemented using  
15 these messages (call flows).

## 16 1.6 Documentation Conventions

---

17 “Shall” and “shall not” identify requirements to be followed strictly to conform to the  
18 standard and from which no deviation is permitted. “Should” and “should not” indicate  
19 that one of several possibilities is recommended as particularly suitable, without  
20 mentioning or excluding others; that a certain course of action is preferred but not  
21 necessarily required; or (in the negative form) that a certain possibility or course of action  
22 is discouraged but not prohibited. “May” and “need not” indicate a course of action  
23 permissible within the limits of the standard. “Can” and “cannot” are used for statements  
24 of possibility and capability, whether material, physical, or causal.

25 The scenarios and examples in this specification are not meant to be exhaustive, but are  
26 only used to help explain some of the important procedures of the protocol.

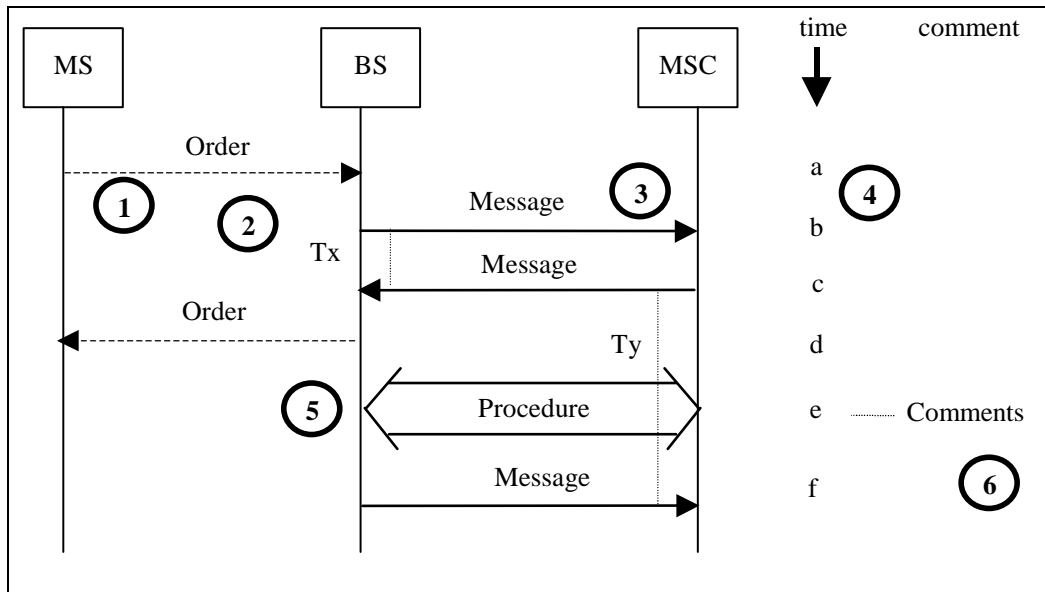
27 Figure 1.6-1 is provided as an example of the conventions used in this specification.

28 Several points within the diagram are worthy of note. The circled numbers in the  
29 following figure correspond to the numbered items below.

- 30 1. Horizontal dotted lines are used to indicate messaging that is not part of  
31 defined interfaces specified in this specification. Not all air interface messages  
32 are shown, and names may be generic. For example, as the phrase “handoff  
33 direction message” is meant to include EHDM, GHDM, and UHDM.
- 34 2. Vertical dotted lines between messages are used to indicate the span of timers.  
35 The timer name is placed as close as possible to the line. Timer names begin  
36 with a capital “T” followed by digits or alphabetic characters. If a timer  
37 expires prior to reception of a message that stops the timer, the expiration is  
38 shown with an ‘x’ at the end of the vertical dotted line.
- 39 3. Horizontal solid lines are used to indicate messaging that is part of the  
40 interfaces specified in this standard.
- 41 4. Lower case letters are associated with individual messaging instances in the  
42 diagram in alphabetical order arranged vertically. These letters correlate the  
43 text below the diagram with portions of the diagram.
- 44 5. Procedures that may involve the exchange of several messages are shown as  
45 an open block arrow with the name of the procedure inside.

1  
2

6. Comments related to parts of the diagram are located in a comment column on the right side of the diagram.



3

**Figure 1.6-1 Document Convention Example: Call Clear Initiated by MS**

4

5

- a. The mobile station transmits an Order over the reverse link.

6

- b. The BS sends a message to the MSC. The BS starts timer  $T_x$ .

7

- c. The MSC sends a message to the BS and starts timer  $T_y$ . The BS stops timer  $T_x$ .

8

9

- d. The BS acknowledges the MS message by returning an Order over the forward link.

10

11

- e. The BS and MSC execute the procedure.

12

- f. The BS returns a message to the MSC. The MSC stops timer  $T_y$ .

## 1.6.1

### Procedural Descriptions

14

The procedural descriptions are broken into sections where each section describes one of the messages in the procedure. The description for each procedure is written to flow through each section devoted to the messages that make up the procedure. Each of these sections has the following subsection breakdowns (as appropriate):

17

18

1. **Successful Operation:** this section is used to describe what the message is for, why the sender is sending it, and what the receiver is expected to do with the message. It may also provide a brief tutorial on the overall impact of this message regarding the particular procedure. It includes invocation of any pertinent timers or discussion of timing constraints. It may also provide subsections that describe the uses of the elements within the message, particularly if they are not obvious.

19

20

21

22

23

24

25

2. **Failure Operation:** if applicable, this section is used to describe the actions of the sender if the expected response is not received by the sender. This includes treatment of timer expiration or receipt of failure messages stemming from the message that was sent.

26

27

28

1  
2  
3  
4

3. Abnormal Operation: if applicable, this section is used to describe out of sequence events that could possibly occur and the treatment by the receiver of the message.

## 2.0 Interface Model

---

The logical reference model used for this standard is the Network Reference Model as shown in [18].

### 2.1 Reference Points A, A<sub>ter</sub>, A<sub>quinter</sub>, and A<sub>quater</sub>

---

The Network Reference Model contains reference points A, A<sub>ter</sub>, A<sub>quinter</sub>, and A<sub>quater</sub> that are implemented by the protocols and interfaces of this standard.

- The A reference point is implemented by A1, A2, A5.
- The A<sub>ter</sub> reference point is implemented by A3 and A7.
- The A<sub>quater</sub> reference point is implemented by A10 and A11.
- The A<sub>quinter</sub> reference point is implemented by A8 and A9.

### 2.2 Interface Reference Model

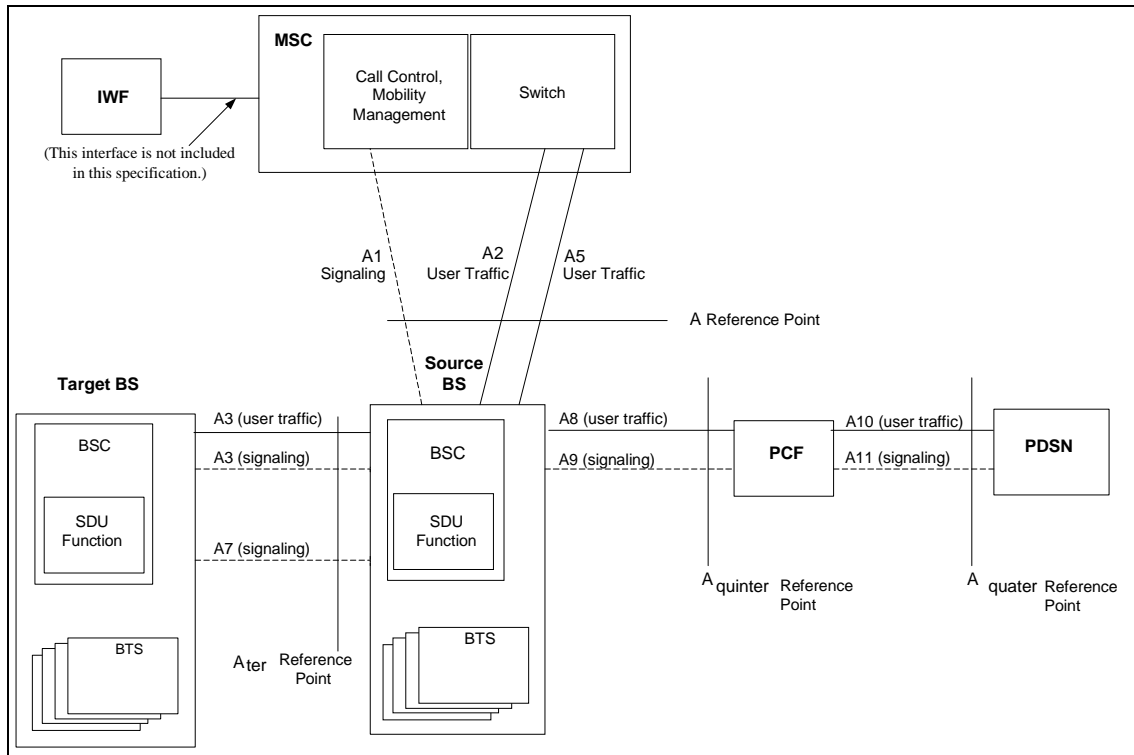
---

The interfaces defined in this standard are described below.

A1	The A1 interface carries signaling information between the Call Control (CC) and Mobility Management (MM) functions of the MSC and the call control component of the BS (BSC).
A2	The A2 interface carries 64/56 kbps PCM information or 64 kbps Unrestricted Digital Information (UDI, for ISDN) between the Switch component of the MSC and the Selection/Distribution Unit (SDU) function of the BS.
A3	The A3 interface carries coded user information (voice/data) and signaling information between the source BS SDU function and the channel element component (BTS) of the target BS. This is a logical description of the endpoints of the A3 interface. The physical endpoints are beyond the scope of this specification. The A3 interface is composed of two parts: signaling and user traffic. The signaling information is carried across a separate logical channel from the user traffic channel, and controls the allocation and use of channels for transporting user traffic.
A5	The A5 interface carries a full duplex stream of bytes between the MSC and the SDU function.
A7	The A7 interface carries signaling information between a source BS and a target BS.
A8	The A8 interface carries user traffic between the BS and the PCF.
A9	The A9 interface carries signaling information between the BS and the PCF.
A10	The A10 interface carries user traffic between the PCF and the PDSN.
A11	The A11 interface carries signaling information between the PCF and the PDSN.

This is a logical architecture that does not imply any particular physical implementation. Figure 2.2-1 shows the relationship among network components in support of mobile originations, mobile terminations, and direct BS-to-BS soft/softer handoff operations.

1



2

3

**Figure 2.2-1 Reference Model for cdma2000 Access Network Interfaces**

4

The A1 interface is used to provide a signaling connection between the source BS and the MSC.

5

6

The A2 interface is used to provide a path for user traffic for circuit-oriented voice and ISDN calls between the source BS and the MSC.

7

8

The A3 interface is used for inter-BS soft/softer handoff when a target BS is attached to the frame selection function within the source BS.

9

10

The A5 interface is used to provide a path for user traffic for circuit-oriented data calls between the source BS and the MSC.

11

12

The A7 interface is used between the source BS and the target BS for inter-BS soft/softer handoff.

13

14

The A8 interface is used to provide a path for user traffic between source BSC and PCF for packet data services.

15

16

The A9 interface is used to provide a signaling connection between source BSC and PCF for packet data services.

17

18

The A10 interface is used to provide a path for user traffic between a PCF and a PDSN for packet data services.

19

20

The A11 interface is used to provide a signaling connection between a PCF and a PDSN for packet data services.

21

22

For this standard, the circuit-oriented data IWF is considered to be located at the MSC.

23

24

For this standard the SDU function is considered to be co-located with the source BSC.

25

## 3.0 Information Flows

---

The interfaces defined in this standard provide:

- bearer (user traffic) connections (A2, A3 (traffic), A5, A8, and A10),
- a signaling connection between the channel element component of the BS and the SDU function (A3 signaling),
- a direct BS to BS signaling connection (A7),
- a signaling connection between the BS and the MSC (A1),
- a signaling connection between the BS and PCF (A9),
- a signaling connection between a PCF and PDSN pair (A11). A11 signaling messages are also used for passing accounting related and other information from the PCF to the PDSN.

In general, the functions specified on the interfaces are based on the premise that the interfaces carry signaling information that traverses the following logical paths:

- between the BS and MSC only (e.g., BS management information);
- between the MS and the MSC via the BS (e.g., the BS maps air interface messages to the MSC-BS Interface);
- between the BS and other network elements via the MSC (e.g., mobility management messages to the HLR);
- between the source BS and the target BS;
- between the BS and the PCF; and
- between the PCF and the PDSN.
- between the MS and the PDSN (e.g., Authorization information and MIP signaling).

These logical paths define all of the traffic that can exist on the defined interfaces. To support these logical paths, the interfaces of this standard can be described by the following characteristics:

- physical and electromagnetic parameters;
- channel structures; and
- message types and contents.

1  
2  
3  
4  
5  
6  
7

(This page intentionally left blank.)

# 4.0 Packet Data Micro-Mobility and Macro-Mobility Concepts

The figure below provides a conceptual view of levels of packet data mobility.

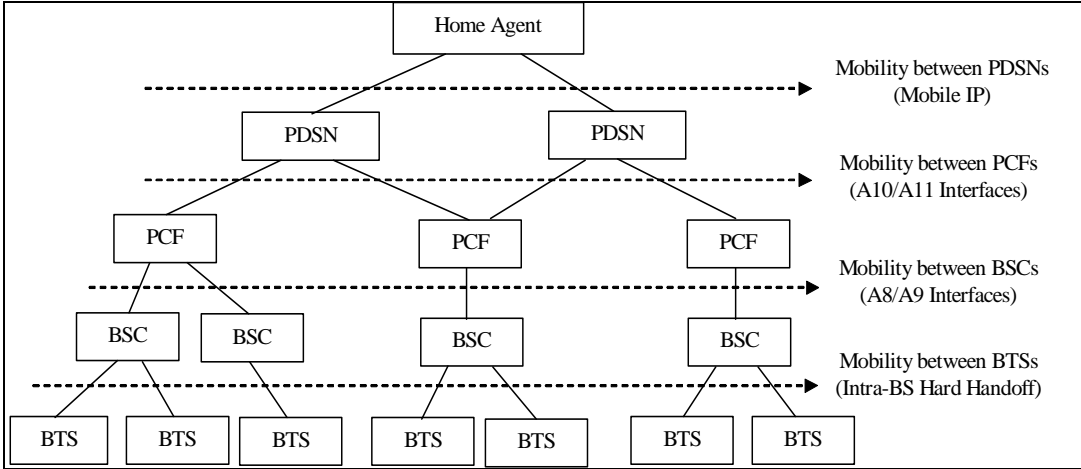


Figure 4.0-1 Levels of Packet Data Mobility

- The A8/A9 interfaces support mobility between BSCs under the same PCF.
- The A10/A11 interfaces support mobility between PCFs under the same PDSN.
- Mobile IP supports mobility between PDSN/FA under the same Home Agent.
- Hard handoff and soft handoff procedures realize the mobility between BTSs.





